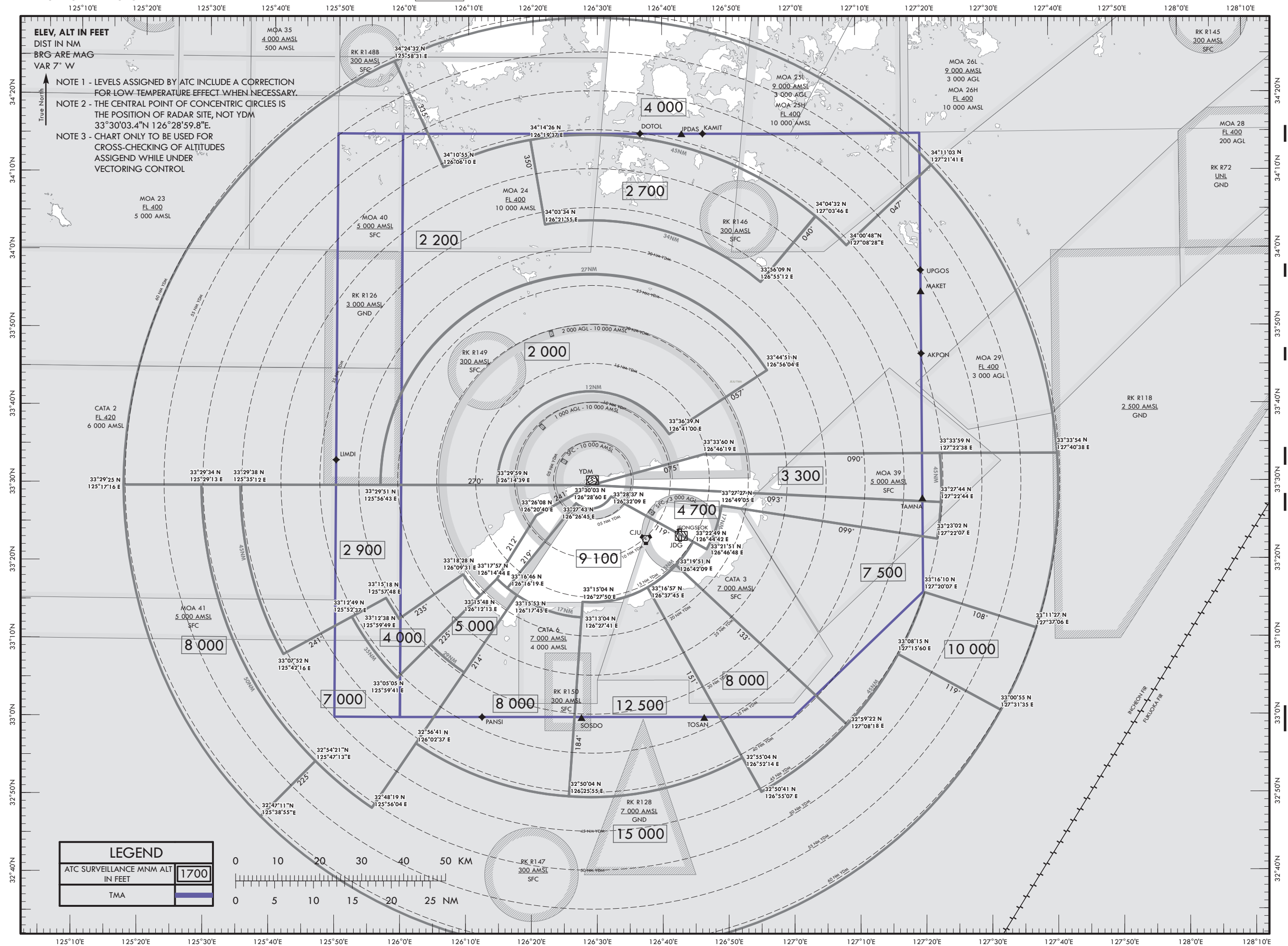


ATC SURVEILLANCE MINIMUM
ALTITUDE CHART - ICAO

AERODROME ELEV 36 m
TRANSITION ALT 14 000 ft

APP 121.2

JEJU/Jeju Intl(RKPC)



Change : Information of reporting requirements for significant points and Establishment of fix(LIMDI).

OFFICE OF CIVIL AVIATION

AIRAC AIP AMDT 2/23
Effective : 1600UTC 22 MAR 2023